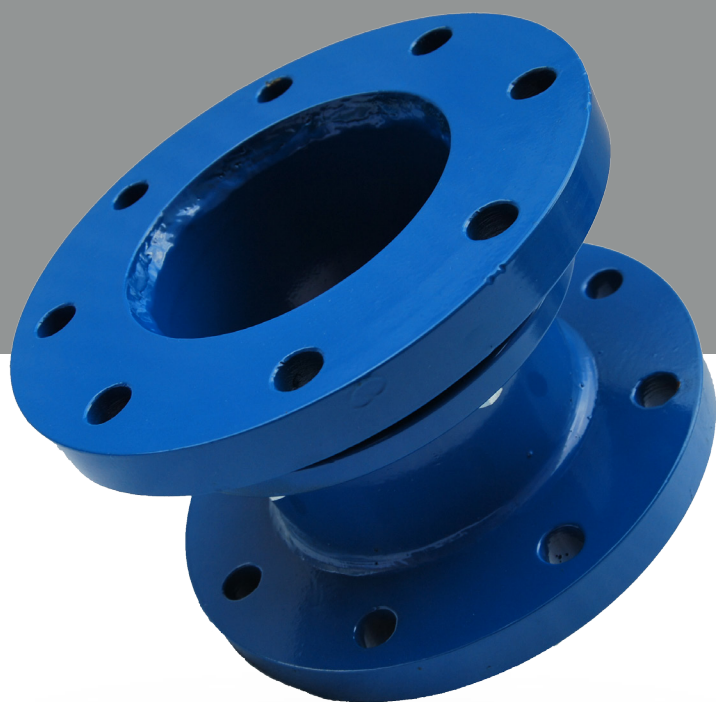




CMO VALVES
manufacturing the valve you need

44A SERIES



FABRICATION RANGE *STEEL DISMANTLING JOINTS*

UTILIZATION:

- Dismantling joints, used with the valves to easily dismantle, without the need to substitute the tube.
- It has minimum head loss, total bore and 100% water tight.

SERIES - 44

STEEL DISMANTLING JOINTS



DIMENSIONES

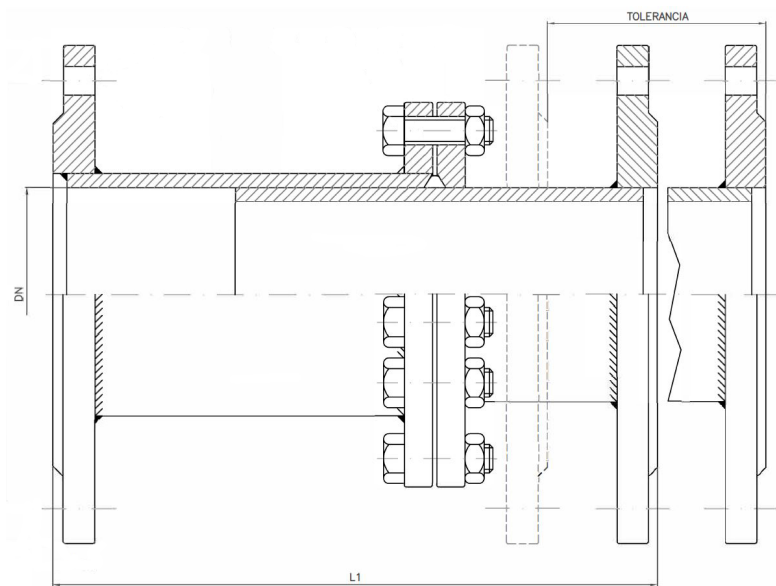
DN	L1	Toler.	Peso	
			PN10	PN16
50	180	±30	6	6
65			8	8
80			10	10
100			11	11
125			13	13
150	200	±40	16	16
200			24	24
250			30	32
300			38	46
350	240	±40	55	65.5
400			71	80
450			80	100
500			100	125
600	300	±50	130	170
700			190	---
800			205	240
900			250	300
1000			300	400
1100			---	---
1200			400	570
1300			---	---
1400			---	---
1500			500	---
1600			730	---
1700			---	---
1800			---	---
2000			1150	---

GENERAL FEATURES:

- Minimum head loss.
- O-rings for 100% water tightness.
- Intermediate flanges are machined to assure the perfect housing of the tightness O-ring.
- Allow big longitudinal movement.
- Working temperature between 0°C and 90°C.

STANDARDS APPLIED:

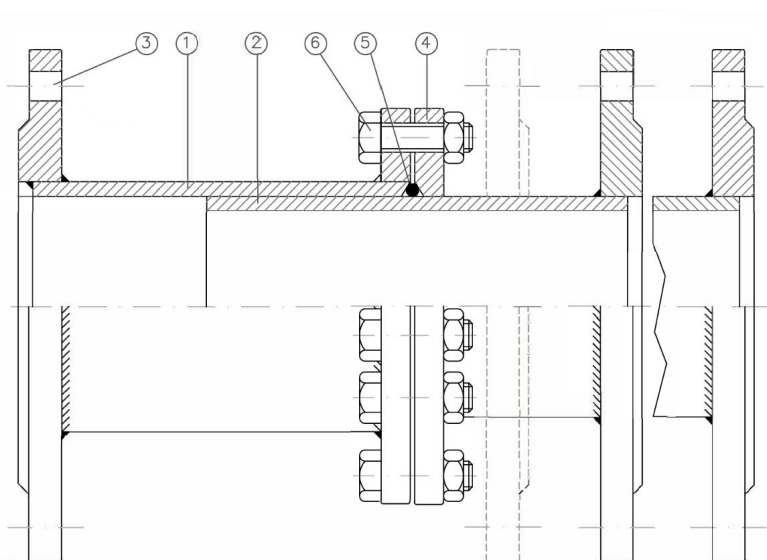
- Hydrostatic tests according to EN 12266-1, class A.
- EC directive.
- Side flanges according to ISO 7005-1.



The images and drawings are non contractual.
The specifications of the shown products could vary with previous notice.

SERIES - 44

STEEL DISMANTLING JOINTS



DESCRIPCION

1	EXTERNAL FLANGE	AISI 304
2	INTERNAL FLANGE	AISI 304
3	FLANGES	CARBON STEEL A-42
4	TIGHTENING FLANGE	CARBON STEEL A-42
5	O-RING	NEOPRENE
6	BOLTS	STEEL 5.6
	PAINTING RAL 5015	Epoxy 70 µm

